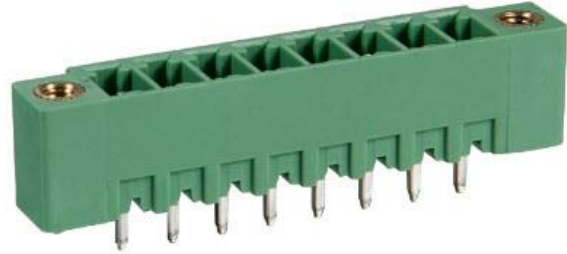


# Terminal Block, Header

## STB1011V-5.0-XX

### Description

The STB1011V-5.0-XX is a terminal block with 3.81 mm pitch and additional fixation flange. The connector is available from 2 up to 24 poles and optionally in a horizontal orientation.



### Typical applications

- Wire to Board
- Board to Wire



### Features

Mechanical Properties	Description
Connector Type	Terminal Block
Dimensions	$((\text{Poles} * 5.0) + 10) \times 12.0 \times 8.6 \text{ mm} \pm 0.2$
Operating Temperature Range	-40°C~+105°C
Pitch	5.00 mm
Poles	2-24 Poles
Contact	Copper Alloy, Sn plated
Insulator body	PA66, UL94V-0
Pin header	Brass, Tin plated

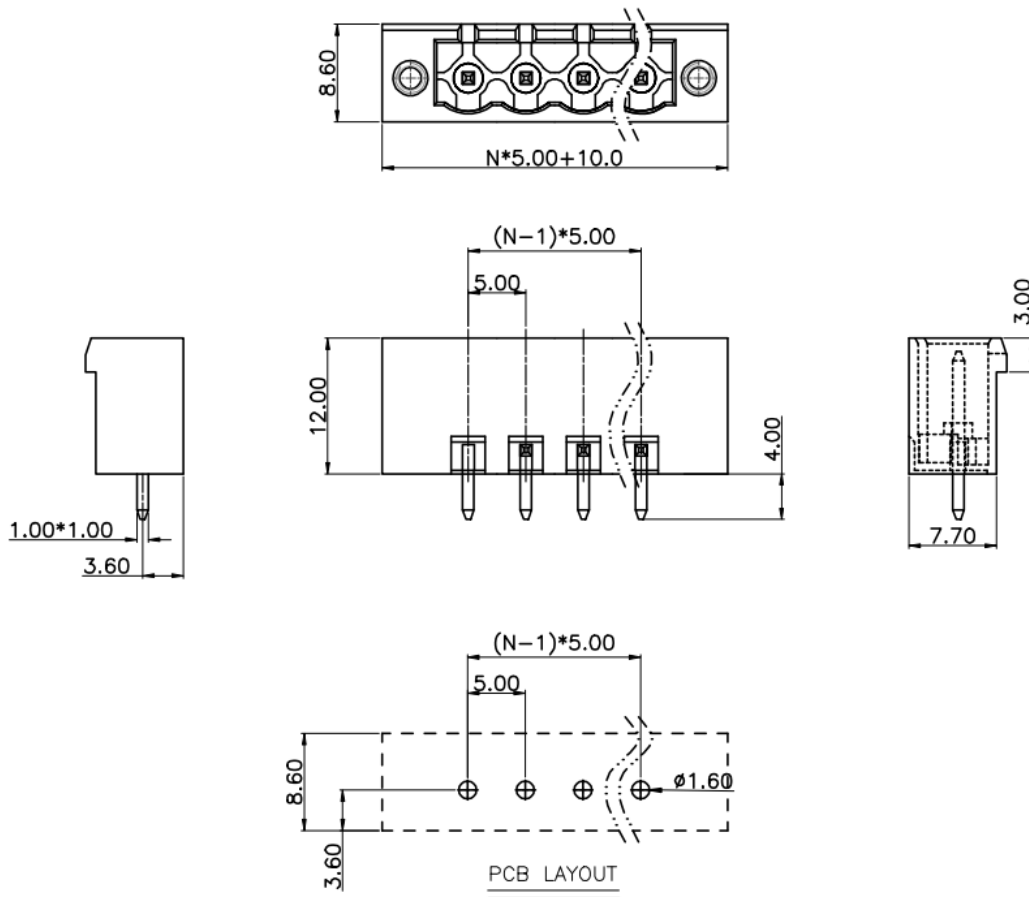
Electrical Properties	Description	
Standard	UL	IEC
Rated Voltage	300V	320V
Rated Current	15A	20A
Withstanding Voltage	AC 1600V / 1Min.	

# Terminal Block, Header

## STB1011V-5.0-XX

### Dimensions

\*unit: mm, N= number of poles



Pole	2	3	4	5	6	7	8	9	10	11	12	13
Length	20	25	30	35	40	45	50	55	60	65	70	75
Pitch	5	10	15	20	25	30	35	40	45	50	55	60

Pole	14	15	16	17	18	19	20	21	22	23	24
Length	80	85	90	95	100	105	110	115	120	125	130
Pitch	65	70	75	80	85	90	95	100	105	110	115

# Terminal Block, Header

## STB1011V-5.0-XX



### Part number

**STB1011X-XXX-XX**

<b>STB1011</b>	Style of connector
<b>V</b>	Vertical
<b>5,0</b>	Pitch
<b>XX</b>	Poles 2,3,4,5,6,7,8, 9,10, 11,12, 13,14,15,16,17,18,19,20, 21,22,23,24

### Ordering information

Ordering can be done via [www.summit-electronics.com](http://www.summit-electronics.com) or via [info@summit-electronics.com](mailto:info@summit-electronics.com). Please contact us for more information. Customisation of the product is available on request.

### Technical support

For all product questions please contact us via [info@summit-electronics.com](mailto:info@summit-electronics.com)

### Document revision

Rev	Date	changes
<b>V01.00</b>	06-04-2023	First issue of document